

# sewoo



## PRINTER PRODUCT GUIDE BOOK

POS Printer  
Label Printer  
Mobile Printer  
KIOSK Machine

Your Complete Hardware  
Solution Partner,  
SEWOO



# YOUR COMPLETE HARDWARE SOLUTION PARTNER

## RETAIL

SEWOO Printing Solutions are widely used in various distribution sectors such as department stores, hypermarkets, and speciality retail stores for printing purposes including receipts, price tags (labels), and coupons.

## TOURISM, DINING

SEWOO Printing Solutions are widely used in various sectors of the tourism and food service industry, including hotels, restaurants, and kitchens, for printing purposes such as receipts, kitchen printers, order labels, and ingredient labels.

## TRANSPORTATION, LOGISTIC

SEWOO Printing Solutions are widely used in various sectors of the transportation and logistics industry, including warehouses, logistics centers, railway stations, and airports, for printing purposes such as parcel and logistics delivery receipts, in-flight duty-free receipts, baggage labels, notices, and airline bus terminal tickets.

## HEALTHCARE

SEWOO Printing Solutions are widely used in various sectors of the healthcare industry, including hospitals, pharmacies, and medical research laboratories, for printing purposes such as patient information, examination results, symptoms, and prescription labels.

## MANUFACTURING

SEWOO Printing Solutions are widely used in various sectors of the manufacturing industry, including warehouses, factories, and production sites, for printing purposes such as invoices and receipts, inventory management labels, product information labels, packaging labels, incoming/management labels, and component tag printing.

## PUBLIC SECTOR

SEWOO Printing Solutions are widely used in various sectors of the public domain, including public institutions, police stations, military, and libraries, for printing purposes such as parking and traffic violation receipts/labels, and book location tags.

## ON-SITE SERVICES

SEWOO Printing Solutions are widely used in various sectors of on-site services, including delivery shops and field service businesses, for printing purposes such as delivery receipts, on-site sales, and service receipts.



# CONTENTS



## POS Printer

Rising New Products  
Unique Design, Best Selling Products  
Traditional & Steady Selling Products  
Slick & Fancy Product  
2-Inch POS Printer  
All Front Access & Exit Design  
Dot Matrix POS Printer

## Label Printer

External Paper Loading  
Direct Thermal Printer  
Thermal Transfer Printer  
RFID

## Mobile Printer

2-Inch Printer  
3-Inch Printer  
4-Inch Printer

## KIOSK Machine

2-Inch Printer  
3-Inch Printer

# POS Printer

SEWOO POS printer line is suited or point-of-sale applications and needs in the marketplace.

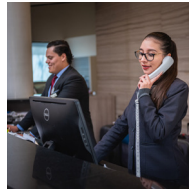
SEWOO POS printers are fast, reliable, versatile.

SEWOO POS printers are fast, reliable, and deliver all the easy-to-use features: drop-in paper loading, compact design, ESC/POS compatibility and easy customization of software each important to the retail, hospitality, banking and food service industries.

## Application



Retail



Hospitality



Banking & Others



Lottery & Coupon

## Key feature



### High energy efficient POS Printer

SEWOO POS Printers have achieved Energy Star certification. Power consumption is reduced by 60% (stand by mode) against competing products without Energy Star Certification.

Great Printing Speed ▶▶ 220 mm/sec



Reliable Auto Cutter Life



1,500,000cut to 1,800,000cut

Easy-to-use editing software



Linerless media printing solution (option)



Edit : Watermarks, Logos, and Coupons

## Offers variety of driver

SEWOO POS printers provide a variety of drivers including Windows, Linux, Mac, OPOS and much more. Also you can produce your own program through our iOS SDK, Android (2.1~) SDK and Windows SDK.

## Thermal Printer

- Windows Driver
- Windows CE & Mobile Driver & SDK(CE 4.2 ~, Mobile 5.0 ~)
- Linux Driver, Mac Driver, OPOS Driver, JavaPOS Driver
- OS SDK, Android(2.1 ~) SDK, Windows SDK

## Dot Impact Printer

- Windows Driver
- Linux, OPOS, Java, WEPOS Driver

You can find the download center in website [www.miniprinter.com](http://www.miniprinter.com) to download drivers, utilites, manual and photos you need.

Rising New Products



SLK-CB125



SLK-TS200

Unique Design,  
Best Selling Products



SLK-TS100



SLK-TS400

Traditional &  
Steady Selling Products



SLK-T12 Series



SLK-T20 Series



SLK-T21 Series



SLK-T32 Series

Slick & Fancy Product



SLK-TL100II

2-Inch POS Printer



SLK-T42

All Front Access &  
Exit Design



SLK-TE25

Dot Matrix POS Printer



SLK-D30

## Rising New Products



SLK-CB125

## PRINTING SPEC

PRINTING	METHOD	
	SPEED	
	WIDTH	
	RESOLUTION	
	DIRECTION	
CHARACTER SET	ALPHA NUMERIC CHARACTER	
	EXPENDED GRAPHIC	
	INTERNATIONAL CHARACTER	
BARCODE	1D	
	2D	
CHARACTER PER LINE	180DPI	Font A(12x24)
		Font B(9x17)
	203DPI	Font A(12x24)
	Font B(9x17)	
DOT	PITCH	

Direct thermal
250mm/sec
80mm(640 Dots/Line)
203dpi
Unidirectional with friction feed
95
128 x 18 Page (1 space page)
16
EAN-8, EAN-13, Code 39, Code 93, Code 128, ITF, UPC-A, UPC-E, Codabar
PDF 417, QR code
46 columns / 42 columns / 30 columns
62 columns / 59 columns / 40 columns
53 columns / 48 columns / 35 columns
71 columns / 64 columns / 46 columns
0.125mm x 0.125mm



SLK-TS200

Direct thermal
250mm/sec
72mm(576 Dots/Line)
203dpi
Unidirectional with friction feed
95
128 x 18 Page (1 space page)
16
EAN-8, EAN-13, Code 39, Code 93, Code 128, ITF, UPC-A, UPC-E, Codabar
PDF 417, QR code
42 columns / 30 columns
59 columns / 40 columns
48 columns / 35 columns
64 columns / 46 columns
0.125mm x 0.125mm

## Unique Design, Best Selling Products



SLK-TS100

Direct thermal
220mm/sec
72mm(576 Dots/Line)
203dpi
Unidirectional with friction feed
95
128 x 18 Page (1 space page)
16
EAN-8, EAN-13, Code 39, Code 93, Code 128, ITF, UPC-A, UPC-E, Codabar
PDF 417, QR code
42 columns
59 columns
48 columns
64 columns
0.125mm x 0.125mm

## PAPER SPEC

PAPER	TYPE
	WIDTH
	THICKNESS
	ROLL DIAMETER
	ROLL CORE INNER DIAMETER

Thermal receipt paper
58mm / 80mm / 82.5mm
0.06 ~ 0.08mm
Max. ø 83mm
12.5mm ± 0.5mm

Thermal receipt paper
58mm / 80mm
0.06 ~ 0.08mm
Max. ø 83mm
12.5mm ± 0.5mm

Thermal receipt paper
80mm
0.06 ~ 0.08mm
Max. ø 80mm
12.5mm ± 0.5mm

## INTERFACE

INTERFACE	STANDARD
	OPTION

1. USB(B type)+Serial(RS232C_9pin) +Ethernet Built-in
2. USB(B type)+Serial(RS232C_9Pin) +RJ45(Serial)
Bluetooth Smart Ready(Bluetooth5.0+BLE) or WiFi(802.11 a/b/g/n) B/T, WF combo

3. USB(B type)+Serial(RS232C_9pin) +Ethernet Built-in
4. USB(B type)+Serial(RS232C_9Pin) +RJ45(Serial)
Bluetooth Smart Ready(Bluetooth5.0+BLE) or WiFi(802.11 a/b/g/n)

1. USB(B type)+Serial(RS-232C_9pin)
2. USB(B type)+Serial(RS-232C_9pin)+Ethernet Built-in
3. USB(B type)+Serial(RS232C-9Pin)+RJ45(Serial)
-

## HARDWARE SPEC

POWER	TYPE
	AD
	DC
AUTO CUTTER	TYPE
	LIFE
	PAPER THICKNESS
	CUTTING METHOD
SENSOR	STANDARD
	OPTION
CASH DRAWER	
RELIABILITY	TPH LIFE
	MCBF
TEMPERATURE	OPERATING TEMPERATURE
	STORAGE TEMPERATURE
HUMIDITY	OPERATING HUMIDITY
	STORAGE HUMIDITY
CERTIFICATION	

External SMPS
110 ~ 220Vac 50/60 Hz
24Vdc / 2.5A
Guillotine
2,000,000 cuts
0.06 ~ 0.08mm
Partial / full Cut
Paper end, Cover open, Paper low( only front )
-
2 circuits(24V, Max. 1A)
150km
80 Million lines
0 ~ 45°C
-10 ~ 60°C
10 ~ 80%
10 ~ 90%
KC, CE, FCC,IC,CB,NRTL

External SMPS
110 ~ 220Vac 50/60 Hz
24Vdc / 2.5A
Guillotine
2,000,000 cuts
0.06 ~ 0.08mm
Partial / full Cut
Paper end, Cover open
-
1 circuit(24V, Max. 1A) / 2 circuits(24V, Max. 1A)
150km
80 Million lines
0 ~ 45°C
-10 ~ 60°C
10 ~ 80%
10 ~ 90%
KC, CE, FCC,IC,CB,NRTL

External SMPS
110 ~ 220Vac 50/60 Hz
24Vdc / 2.5A
Guillotine
1,500,000 cuts
0.06 ~ 0.08mm
Partial Cut
Paper end, Cover open
-
1 circuit(24V, Max. 1A) / 2 circuits(24V, Max. 1A)
100km
80 Million lines
0 ~ 45°C
-10 ~ 60°C
10 ~ 80%
10 ~ 90%
KC, CE, FCC, Energy Star

## DIMENSION

DIMENSION	W x D x H (mm)
	W x D x H (inch)
WEIGHT	

125 x 131.5 x 125
4.92 x 5.17 x 4.92
0.91kg

136 x 174 x 132
5.35 x 6.85 x 5.19
1.04kg

142 x 185 x 136
5.59 x 7.28 x 5.35
1.02kg

## ETC

USB to VCOM & LAN to VCOM
ACCESSORIES

USB to VCOM : Support, LAN to VCOM : Unsupport
Melody box, 24V Buzzer, Paper Guide

USB to VCOM : Support, LAN to VCOM : Unsupport
Melody box, 24V Buzzer, Paper Guide

USB to VCOM : Support, LAN to VCOM : Unsupport
Melody box, 24V Buzzer, Paper Guide

Unique Design, Best Selling Products



SLK-TS400

PRINTING SPEC

PRINTING	METHOD	
	SPEED	
	WIDTH	
	RESOLUTION	
	DIRECTION	
CHARACTER SET	ALPHA NUMERIC CHARACTER	
	EXPENDED GRAPHIC	
	INTERNATIONAL CHARACTER	
BARCODE	1D	
	2D	
CHARACTER PER LINE	180DPI	Font A(12x24)
		Font B(9x17)
	203DPI	Font A(12x24)
		Font B(9x17)
DOT	PITCH	

Direct thermal
220mm/sec
72mm(512 Dots/Line)
180 DPI
Unidirectional with friction feed
95
128 x 18 Page (1 space page)
14
EAN-8, EAN-13, Code 39, Code 93, Code 128, ITF, UPC-A, UPC-E, Codabar
PDF 417, QR code, DATA MATRIX
42 columns
56 columns
-
-
0.141mm x 0.141mm

PAPER SPEC

PAPER	TYPE	
	WIDTH	
	THICKNESS	
	ROLL DIAMETER	
	ROLL CORE INNER DIAMETER	

Thermal receipt paper
80mm
0.06 ~ 0.09mm
Max. ø 83mm
12.5mm ± 0.5mm

INTERFACE

INTERFACE	STANDARD	
	OPTION	

USB(B type)+Serial(RS-232C_25pin) Built-in
Wi-Fi(802.11a/b/g/n), Bluetooth Smart Ready (Bluetooth4.2+BLE)

HARDWARE SPEC

POWER	TYPE	
	AD	
	DC	
AUTO CUTTER	TYPE	
	LIFE	
	PAPER THICKNESS	
	CUTTING METHOD	
SENSOR	STANDARD	
	OPTION	
CASH DRAWER		
RELIABILITY	TPH LIFE	
	MCBF	
TEMPERATURE	OPERATING TEMPERATURE	
	STORAGE TEMPERATURE	
HUMIDITY	OPERATING HUMIDITY	
	STORAGE HUMIDITY	
CERTIFICATION		

External SMPS
100 ~ 240Vac 50/60 Hz
24Vdc / 1.75A
Guillotine
2,000,000 cuts
0.06 ~ 0.09mm
Full / Partial Cut
Paper end, Cover open
-
1 circuit(24V, Max. 1A) / 2 circuits(24V, Max. 1A)
160km
60 Million lines
0 ~ 45°C
-20 ~ 60°C
35 ~ 80%
10 ~ 90%
CE, FCC, KC, UL/cUL, CB, ENERGY STAR

DIMENSION

DIMENSION	W x D x H (mm)	
	W x D x H (inch)	
WEIGHT		

130 x 140 x 154
5.11 x 5.51 x 6.06
1.25kg

ETC

USB to VCOM & LAN to VCOM	
ACCESSORIES	

USB to VCOM : Support, LAN to VCOM : Unsupport
Melody box, 24V Buzzer

Traditional & Steady Selling Products



SLK-T12 Series

SLK-TE122	SLK-TL122	SLK-T12EB
Direct thermal		
Max. 220mm/sec / Linerless Max. 160mm/sec		
72mm / 72mm(80mm)		
180 / 203DPI		
Unidirectional with friction feed		
95		
128 x 18 Page (1 space page)		
14		
EAN-8, EAN-13, Code 39, Code 93, Code 128, ITF, UPC-A, UPC-E, Codabar		
PDF 417, QR code, DATA MATRIX		
42 columns		
56 columns		
-		
-		
0.141mm x 0.141mm(180DPI) / 0.125mm x 0.125mm(203DPI)		

Thermal receipt paper / Linerless(Optional)-MAXSTICK X2		
50 ~ 82.5mm		
0.06 ~ 0.09mm		
Max. ø 80.0mm		
12.5mm ± 0.5mm		

USB(B type)	USB(B type)+ Serial(RS-232C_9pin) Built-in	USB(B type)+ Serial(RS-232C_9pin)+Ethernet Built-in
Serial(RS-232C), Parallel(IEEE1284), Ethernet, Wi-Fi(802.11 a/b/g/n), Bluetooth Smart Ready (Bluetooth4.2+BLE)	-	-

External SMPS
100 ~ 240Vac 50/60 Hz
24Vdc / 1.75A
Guillotine
2,000,000 cuts / Linerless-1,000,000 cuts
0.06 ~ 0.09mm
Full / Partial Cut
Paper end, Paper low, Cover open
Black mark
2 circuits(24V, 1A Max.)
160km
60 Million lines
0 ~ 45°C
-20 ~ 60°C
35 ~ 80%
10 ~ 90%
CE, FCC, KC, UL/cUL, ENERGY STAR, CB

152 x 202 x 150.5
5.98 x 7.95 x 5.91
1.7kg

USB to VCOM : Support, LAN to VCOM : Unsupport
Melody box, Spill proof cover, 24V Buzzer, Paper Guide



SLK-T20 Series

## PRINTING SPEC

PRINTING	METHOD	
	SPEED	
	WIDTH	
	RESOLUTION	
	DIRECTION	
CHARACTER SET	ALPHA NUMERIC CHARACTER	
	EXPENDED GRAPHIC	
	INTERNATIONAL CHARACTER	
BARCODE	1D	
	2D	
CHARACTER PER LINE	180DPI	Font A(12x24)
		Font B(9x17)
	203DPI	Font A(12x24)
		Font B(9x17)
DOT	PITCH	

## PAPER SPEC

PAPER	TYPE	
	WIDTH	
	THICKNESS	
	ROLL DIAMETER	
	ROLL CORE INNER DIAMETER	

## INTERFACE

INTERFACE	STANDARD	
	OPTION	

## HARDWARE SPEC

POWER	TYPE	
	AD	
	DC	
AUTO CUTTER	TYPE	
	LIFE	
	PAPER THICKNESS	
	CUTTING METHOD	
SENSOR	STANDARD	
	OPTION	
CASH DRAWER		
RELIABILITY	TPH LIFE	
	MCBF	
TEMPERATURE	OPERATING TEMPERATURE	
	STORAGE TEMPERATURE	
HUMIDITY	OPERATING HUMIDITY	
	STORAGE HUMIDITY	
CERTIFICATION		

## DIMENSION

DIMENSION	W x D x H (mm)	
	W x D x H (inch)	
WEIGHT		

## ETC

USB to VCOM & LAN to VCOM	
ACCESSORIES	

SLK-TE202 II	SLK-TL202 II	SLK-T20EB II	SLK-TE203	SLK-TL203	SLK-T203EB
Direct thermal					
Max. 220mm/sec / Linerless Max. 160mm/sec			250mm/sec(203DPI), 300mm/sec(180DPI)		
72mm / 72mm(80mm)					
180 / 203DPI					
Unidirectional with friction feed					
95					
128 x 18 Page (1 space page)					
14					
EAN-8, EAN-13, Code 39, Code 93, Code 128, ITF, UPC-A, UPC-E, Codabar					
PDF 417, QR code, DATA MATRIX					
42 columns					
56 columns					
-					
-					
0.141mm x 0.141mm(180DPI)/0.125mm x 0.125mm(203DPI)					
Thermal receipt paper / Linerless(Optional)-MAXSTICK X2					
50 ~ 82.5mm					
0.06 ~ 0.09mm					
Max. ø 80.0mm					
12.5mm ± 0.5mm					
USB(B type)	USB(B type)+ Serial(RS-232C_9pin) Built-in	USB(B type)+ Serial(RS-232C_9pin)+Ethernet Built-in	USB(B type)	USB(B type)+ Serial(RS-232C_9pin) Built-in	USB(B type)+ Serial(RS-232C_9pin)+Ethernet Built-in
Serial(RS-232C), Parallel(IEEE1284), Ethernet, Wi-Fi(802.11 a/b/g/n), Bluetooth Smart Ready (Bluetooth4.2+BLE)	-	-	Serial(RS-232C), Parallel(IEEE1284), Ethernet, Wi-Fi(802.11 a/b/g/n), Bluetooth Smart Ready (Bluetooth4.2+BLE)	-	-
External SMPS					
100 ~ 240Vac 50/60 Hz					
24Vdc / 1.75A					
Guillotine					
2,000,000 cuts / Linerless-1,000,000 cuts			2,000,000 cuts		
0.06 ~ 0.09mm					
Full / Partial Cut					
Paper end, Paper low, Cover open					
Black mark					
2 circuits(24V, 1A Max.)					
160km / Linerless 100km					
60 Million lines					
0 ~ 45°C / Linerless-0 ~30°C					
-20 ~ 60°C					
35 ~ 80%					
10 ~ 90%					
CE, FCC, KC, UL/cUL, ENERGY STAR, CB					
152 x 204 x 150					
5.98 x 8.03 x 5.82					
1.7kg					
USB to VCOM : Support, LAN to VCOM : Unsupport					
Melody box, Spill proof cover, 24V Buzzer, Paper Guide					



## Traditional &amp; Steady Selling Products



SLK-T21 Series

## PRINTING SPEC

PRINTING	METHOD	
	SPEED	
	WIDTH	
	RESOLUTION	
	DIRECTION	
CHARACTER SET	ALPHA NUMERIC CHARACTER	
	EXPENDED GRAPHIC	
	INTERNATIONAL CHARACTER	
BARCODE	1D	
	2D	
CHARACTER PER LINE	180DPI	Font A(12x24)
		Font B(9x17)
	203DPI	Font A(12x24)
		Font B(9x17)
DOT	PITCH	

SLK-TE212 II	SLK-TL212 II	SLK-T21EB II	SLK-TE213	SLK-TL213	SLK-T213EB
Direct thermal					
Max. 220mm/sec / Linerless Max. 160mm/sec			250mm/sec(203DPI), 300mm/sec(180DPI)		
72mm / 72mm(80mm)					
180 / 203DPI					
Unidirectional with friction feed					
95					
128 x 18 Page (1 space page)					
14					
EAN-8, EAN-13, Code 39, Code 93, Code 128, ITF, UPC-A, UPC-E, Codabar					
PDF 417, QR code, DATA MATRIX					
42 columns					
56 columns					
-					
-					
0.141mm x 0.141mm(180DPI)/0.125mm x 0.125mm(203DPI)					

## PAPER SPEC

PAPER	TYPE	
	WIDTH	
	THICKNESS	
	ROLL DIAMETER	
	ROLL CORE INNER DIAMETER	

Thermal receipt paper / Linerless(Optional)-MAXSTICK X2					
50 ~ 82.5mm					
0.06 ~ 0.09mm					
Max. ø 80.0mm					
12.5mm ± 0.5mm					

## INTERFACE

INTERFACE	STANDARD	
	OPTION	

USB(B type)	USB(B type)+ Serial(RS-232C_9pin) Built-in	USB(B type)+ Serial(RS-232C_9pin)+Ethernet Built-in	USB(B type)	USB(B type)+ Serial(RS-232C_9pin) Built-in	USB(B type)+ Serial(RS-232C_9pin)+Ethernet Built-in
Serial(RS-232C), Parallel(IEEE1284), Ethernet, Wi-Fi(802.11 a/b/g/n), Bluetooth Smart Ready (Bluetooth4.2+BLE)	-	-	Serial(RS-232C), Parallel(IEEE1284), Ethernet, Wi-Fi(802.11 a/b/g/n), Bluetooth Smart Ready (Bluetooth4.2+BLE)	-	-

## HARDWARE SPEC

POWER	TYPE	
	AD	
	DC	
AUTO CUTTER	TYPE	
	LIFE	
	PAPER THICKNESS	
	CUTTING METHOD	
SENSOR	STANDARD	
	OPTION	
CASH DRAWER		
RELIABILITY	TPH LIFE	
	MCBF	
TEMPERATURE	OPERATING TEMPERATURE	
	STORAGE TEMPERATURE	
HUMIDITY	OPERATING HUMIDITY	
	STORAGE HUMIDITY	
CERTIFICATION		

External SMPS					
100 ~ 240Vac 50/60 Hz					
24Vdc / 1.75A					
Guillotine					
2,000,000 cuts / Linerless-1,000,000 cuts			2,000,000 cuts		
0.06 ~ 0.09mm					
Full / Partial Cut					
Paper end, Paper low, Cover open					
Black mark					
2 circuits(24V, 1A Max.)					
160km / Linerless 100km					
60 Million lines					
0 ~ 45°C					
-20 ~ 60°C					
10 ~ 80RH%					
10 ~ 90%					
CE, FCC, KC, UL/cUL, ENERGY STAR, CB					

## DIMENSION

DIMENSION	W x D x H (mm)	
	W x D x H (inch)	
WEIGHT		

152 x 204 x 150					
5.98 x 8.03 x 5.82					
1.7kg					

## ETC

USB to VCOM & LAN to VCOM	
ACCESSORIES	

USB to VCOM : Support, LAN to VCOM : Unsupport					
Melody box, 24V Buzzer, Paper Guide					



SLK-T32 Series

## PRINTING SPEC

PRINTING	METHOD
	SPEED
	WIDTH
	RESOLUTION
	DIRECTION
CHARACTER SET	ALPHA NUMERIC CHARACTER
	EXPENDED GRAPHIC
	INTERNATIONAL CHARACTER
BARCODE	1D
	2D
CHARACTER PER LINE	180DPI Font A(12x24)
	Font B(9x17)
	203DPI Font A(12x24)
	Font B(9x17)
DOT	PITCH

SLK-TE322 II	SLK-TL322 II	SLK-T32EB II	SLK-TE323	SLK-TL323	SLK-T323EB
Direct thermal					
Max. 220mm/sec / Linerless Max. 160mm/sec			250mm/sec(203DPI), 300mm/sec(180DPI)		
72mm / 72mm(80mm)					
180 / 203DPI					
Unidirectional with friction feed					
95					
128 x 18 Page (1 space page)					
14					
EAN-8, EAN-13, Code 39, Code 93, Code 128, ITF, UPC-A, UPC-E, Codabar					
PDF 417, QR code, DATA MATRIX					
42 columns					
56 columns					
0.141mm x 0.141mm(180DPI)/0.125mm x 0.125mm(203DPI)					

## PAPER SPEC

PAPER	TYPE
	WIDTH
	THICKNESS
	ROLL DIAMETER
	ROLL CORE INNER DIAMETER

Thermal receipt paper / Linerless(Optional)-MAXSTICK X2					
50 ~ 82.5mm					
0.06 ~ 0.09mm					
Max. ø 80.0mm					
12.5mm ± 0.5mm					

## INTERFACE

INTERFACE	STANDARD
	OPTION

USB(B type)	USB(B type)+ Serial(RS-232C_9pin) Built-in	USB(B type)+ Serial(RS-232C_9pin)+Ethernet Built-in	USB(B type)	USB(B type)+ Serial(RS-232C_9pin) Built-in	USB(B type)+ Serial(RS-232C_9pin)+Ethernet Built-in
Serial(RS-232C), Parallel(IEEE1284), Ethernet, Wi-Fi(802.11 a/b/g/n), Bluetooth Smart Ready (Bluetooth4.2+BLE)	-	-	Serial(RS-232C), Parallel(IEEE1284), Ethernet, Wi-Fi(802.11 a/b/g/n), Bluetooth Smart Ready (Bluetooth4.2+BLE)	-	-

## HARDWARE SPEC

POWER	TYPE
	AD
	DC
AUTO CUTTER	TYPE
	LIFE
	PAPER THICKNESS
	CUTTING METHOD
SENSOR	STANDARD
	OPTION
CASH DRAWER	
RELIABILITY	TPH LIFE
	MCBF
TEMPERATURE	OPERATING TEMPERATURE
	STORAGE TEMPERATURE
HUMIDITY	OPERATING HUMIDITY
	STORAGE HUMIDITY
CERTIFICATION	

External SMPS					
100 ~ 240Vac 50/60 Hz					
24Vdc / 1.75A					
Guillotine					
2,000,000 cuts / Linerless-1,000,000 cuts			2,000,000 cuts		
0.06 ~ 0.09mm					
Full / Partial Cut					
Paper end, Paper low, Cover open					
Black mark					
2 circuits(24V, 1A Max.)					
160km / Linerless 100km					
60 Million lines					
0 ~ 45°C					
-20 ~ 60°C					
35 ~ 80%					
10 ~ 90%					
CE, FCC, KC, UL/cUL, ENERGY STAR, CB					

## DIMENSION

DIMENSION	W x D x H (mm)
	W x D x H (inch)
WEIGHT	

156 x 206 x 155					
6.14 x 8.11 x 6.10					
1.7kg					

## ETC

USB to VCOM & LAN to VCOM
ACCESSORIES

USB to VCOM : Support, LAN to VCOM : Unsupport					
Melody box, 24V Buzzer, Paper Guide					

## Slick &amp; Fancy Product



SLK-TL100II

## PRINTING SPEC

PRINTING	METHOD	
	SPEED	
	WIDTH	
	RESOLUTION	
	DIRECTION	
CHARACTER SET	ALPHA NUMERIC CHARACTER	
	EXPENDED GRAPHIC	
	INTERNATIONAL CHARACTER	
BARCODE	1D	
	2D	
CHARACTER PER LINE	180DPI	Font A(12x24) Font B(9x17)
	203DPI	Font A(12x24) Font B(9x17)
	DOT	PITCH

Direct thermal
200mm/sec
72mm(512 Dots/Line)
180 DPI
Unidirectional with friction feed
95
128 x 18 Page (1 space page)
14
EAN-8, EAN-13, Code 39, Code 93, Code 128, ITF, UPC-A, UPC-E, Codabar
PDF 417, QR code, DATA MATRIX
42 columns
56 columns
0.141mm x 0.141mm

## 2-Inch POS Printer



SLK-T42

Direct thermal
200mm/sec
54mm(432Dots/Line)
203 DPI
Unidirectional with friction feed
95
128 x 18 Page (1 space page)
14
EAN-8, EAN-13, Code 39, Code 93, Code 128, ITF, UPC-A, UPC-E, Codabar
PDF 417, QR code, DATA MATRIX
36 columns
48 columns
0.125mm x 0.125mm

## All Front Access &amp; Exit Design



SLK-TE25

Direct thermal
200mm/sec
72mm(512 Dots/Line)
180 DPI
Unidirectional with friction feed
95
128 x 18 Page (1 space page)
14
EAN-8, EAN-13, Code 39, Code 93, Code 128, ITF, UPC-A, UPC-E, Codabar
PDF 417, QR code, DATA MATRIX
42 columns
56 columns
0.141mm x 0.141mm

## PAPER SPEC

PAPER	TYPE
	WIDTH
	THICKNESS
	ROLL DIAMETER
	ROLL CORE INNER DIAMETER

Thermal receipt paper
79mm ± 0.5mm
0.06 ~ 0.09mm
Max. ø 83mm
12.5mm ± 0.5mm

Thermal receipt paper
59mm ± 0.5mm
0.06 ~ 0.09mm
Max. ø 60mm
12.5mm ± 0.5mm

Thermal receipt paper
59mm / 80mm
0.06 ~ 0.09mm
Max. ø 83mm
12.5mm ± 0.5mm

## INTERFACE

INTERFACE	STANDARD
	OPTION

USB(B type)+Serial(RS-232C_9pin) Built-in
Bluetooth Smart Ready (Bluetooth4.2+BLE)

USB(A type)+Serial(RS-232C_9pin) Built-in
-

USB(B type)
Serial(RS-232C), Parallel(IEEE1284), Ethernet, Wi-Fi(802.11b), Bluetooth Smart Ready (Bluetooth4.2+BLE)

## HARDWARE SPEC

POWER	TYPE
	AD
	DC
AUTO CUTTER	TYPE
	LIFE
	PAPER THICKNESS
	CUTTING METHOD
SENSOR	STANDARD
	OPTION
CASH DRAWER	
RELIABILITY	TPH LIFE
	MCBF
TEMPERATURE	OPERATING TEMPERATURE
	STORAGE TEMPERATURE
HUMIDITY	OPERATING HUMIDITY
	STORAGE HUMIDITY
CERTIFICATION	

External SMPS
100 ~ 240Vac 50/60 Hz
24Vdc / 1.75A
Guillotine
2,000,000 cuts
0.06 ~ 0.09mm
Full / Partial Cut
Paper end, Paper low, Cover open
Black mark
2 circuits(24V, 1A Max.)
160km
60 Million lines
5 ~ 40°C
-20 ~ 60°C
10 ~ 90%
10 ~ 90%
CB, CE, FCC, KC

External SMPS
100 ~ 240Vac 50/60 Hz
24Vdc / 1.75A
Guillotine
1,000,000 cuts
0.06 ~ 0.09mm
Partial Cut
Paper end, Cover open
Black mark
2 circuits(24V, 1A Max.)
100km
60 Million lines
0 ~ 45°C
-20 ~ 60°C
35 ~ 80%
10 ~ 90%
CE, FCC, KC

External SMPS
100 ~ 240Vac 50/60 Hz
24Vdc / 1.75A
Guillotine
2,000,000 cuts
0.06 ~ 0.09mm
Full / Partial Cut
Paper end, Paper low, Cover open
Black mark
2 circuits(24V, 1A Max.)
160km
60 Million lines
5 ~ 40°C
-20 ~ 60°C
35 ~ 80%
10 ~ 90%
CE, FCC, KC, UL/cUL, ENERGY STAR

## DIMENSION

DIMENSION	W x D x H (mm)
	W x D x H (inch)
WEIGHT	

136 x 165 x 111
5.35 x 6.49 x 4.37
1.0kg

120 x 182 x 106
4.7 x 7.16 x 4.17
0.88kg

112.5 x 200 x 125
4.42 x 7.87 x 4.92
1.4kg

## ETC

USB to VCOM & LAN to VCOM
ACCESSORIES

USB to VCOM : Support, LAN to VCOM : Unsupport
Melody box, 24V Buzzer, Paper Guide

USB to VCOM : Support, LAN to VCOM : Unsupport
24V Buzzer

USB to VCOM : Support, LAN to VCOM : Unsupport
Melody box, 24V Buzzer, Paper Guide



SLK-D30

## PRINTING SPEC

PRINTING	METHOD
	SPEED
	WIDTH
	RESOLUTION
	DIRECTION
	LINE SPACING
FONT	SIZE
DOT	TOTAL NUMBER
DATA BUTTER	

	9-pin Serial dot impact matrix
	4.7 Line/sec
	63.5mm(2.5inch)
	160 DPI / 80 DPI
	Bi-Directional (with Logical Seeking)
	n/144inch
	7 x 9, 9 x 9 / 5 x 9, 7 x 9
	400 Dots/Line
	48 Kbyte

## PAPER/MEDIA SPEC

INK RIBBON	
PAPER	TYPE
	WIDTH
	COPIES

	ERC-38 Compatible(Black, Purple, Black/Red)
	Roll paper
	57.5mm(2.2inch), 69.5mm(2.7inch), 76.2mm(3inch)
	Original + 2copies

## HARDWARE SPEC

POWER	TYPE
	AD
	DC
AUTO CUTTER	TYPE
	LIFE
	PAPER THICKNESS
	CUTTING METHOD
SENSOR	STANDARD
	OPTION
CASH DRAWER	
RELIABILITY	MCBF
	PRINTER HEAD
TEMPERATURE	OPERATING TEMPERATURE
	STORAGE TEMPERATURE
HUMIDITY	OPERATING HUMIDITY
	STORAGE HUMIDITY
CERTIFICATION	

	External SMPS
	100 ~ 240Vac 50/60 Hz
	24Vdc / 1.75A
	Guillotine
	1,000,000 cuts
	0.06 ~ 0.09mm
	Full/Partial Cut
	Paper end, Paper low, Cover open
	Black mark
	-
	18 Million lines
	120 Million characters
	0 ~ 45°C
	-20 ~ 60°C
	35 ~ 80%
	10 ~ 90%
	CE, FCC, KC, UL/cUL

## INTERFACE

INTERFACE	
-----------	--

Serial(RS-232C), Parallel(Centronics 36pin), Ethernet, USB, Combo(Serial+USB)

## EMULATION

EMULATION	
NO.OF COLUMNS	

TM-U200, TM-U300, iDP-3540, SP200 Command Compatible

TM-U200 Emulation : 42/35, 40/33  
Other Emulation : 40/33

## DRIVER

DRIVER	
--------	--

Windows Driver(2012, 8, 7, 2008, VISTA, 2003, XP, 32bit &amp; 64bit), Linux Driver, OPOS Driver, JavaPOS Driver, WEPOS Driver

## DIMENSION

DIMENSION	W x D x H (mm)
	W x D x H (inch)
WEIGHT	

	156 x 243.2 x 150
	6.14 x 9.57 x 5.97
	2.38kg(Cutter), 2.25kg(Non cutter)

# Accessories

## Interface Cable



USB Cable



Serial Cable



SMPS

## Paper Guide



### Supported Devices

SLK-T12 Series,  
SLK-T20 Series



### Supported Devices

SLK-CB125, SLK-TS200,  
SLK-TS100, SLK-T12 Series,  
SLK-T20 Series,  
SLK-T32 Series,  
SLK-TL100II, SLK-TE25

## Melody Box



## 24V Buzzer



# Label Printer

SEWOO Label printers are cost-effective, reliable, versatile.

Benefit from The Smart Labeling Solution by SEWOO LK-B series.

LK-B series provides reliable performance with stable maintenance. It is easy to use and cost effective printers for various businesses reliant on barcode and tagging needs. The LK-B series provides versatility and easy-of-use in adjusting to a wide range of business applications such as: warehouse management, postal service, healthcare, manufacturing, and retail.

## Application

### Label



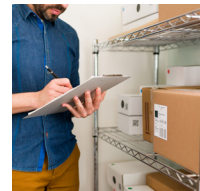
Delivery



Laboratory

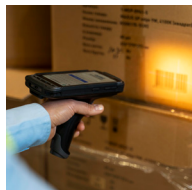


Hospital



Warehouse

### RFID Tag



Tracking



Personal Management



Inventory



Airport

## Key feature

### Compact Design

SEWOO Label printers are compactly designed, minimizing the space needed for printers in the field. Yet our printers still contain a large paper capacity (ø127mm diameter in paper roll) for industrial use.

### Various Sensors

SEWOO Label printers utilize Label gap sensors, Notch sensors, and Black mark sensors to fit various types of label papers in all fields and industries.

### Wide Paper width up to 20 ~ 114mm



SEWOO Label printer provides a wide range of width of the label, minimum 20mm to maximum 114mm.

### Convenient Replacement of Consumable Parts

SEWOO Label printers are designed to be user-friendly. Thermal Printer head is easily removed with a coin and replaced. Simplicity in repair reduces costs and saves time.

### Easy Cutting and Peeling Options added in Modular Format

---

External Paper Loading



LK-B425

---

Direct Thermal Printer



LK-B30II



LK-B30IIE

---

Thermal Transfer Printer



LK-B24



LK-B20II/LK-B230II

---

RFID



LK-B230IIR

## External Paper Loading



LK-B425

## PRINTING SPEC

PRINTING	METHOD	Direct thermal
	SPEED	152mm/sec
	WIDTH	104mm (4.1")
	LENGTH	1,000mm (39.3")
	RESOLUTION	203 DPI (8 dots/mm)
BARCODE	1D	Code39, Code128 with subsets A/B/C/Auto, UCC/EAN-128, Code93, Codabar, Interleaved 2 of 5, UPC-A, UPC-E, UPC-A and E with 2 or 5 digit extension, EAN-8, EAN-13, EAN-8 and 13 with 2 or 5 digit extensions, Postnet, Plessey, MSI-3, German Post CodeLogmars, Code11, UPC Interleaved 2 of 5, Industrial 2 of 5, Standard 2 of 5, Planet, ANSI, Logmars
	2D	MaxiCode, PDF 417, Data Matrix, QR Code, MicroPDF417, AZTEC, Code 49, CODABLOCK, RSS
FONT SPECIFICATION	EPL II	6 bitmapped 8x12, 10x16, 12x20, 14x24, 32x48, 24x24(KSC5601)
	ZPL II	9 bitmapped 5x9, 7x11, 10x18, 15x28, 13x26, 40x60, 13x21, 24x24 2 smooth scalable(English, Korean)

## MEDIA SPEC

MEDIA	TYPE	Roll, Fanfold, Blackmark, Continuous, Gap, Notch Sensor
	WIDTH	25 ~ 114mm
	THICKNESS	0.065 ~ 0.20mm
	ROLL DIAMETER	Up to 127mm (5")
	INNER CORE	25.4mm (1") or 38.1mm (1.5")
RIBBON	WIDTH	-
	LENGTH	-
	TYPE	-

## INTERFACE

INTERFACE	STANDARD	USB, Serial(RS-232C), Ethernet
	OPTION	Wi-Fi(802.11a/b/g/n), Bluetooth Smart Ready (Bluetooth4.2+BLE)

## HARDWARE SPEC

MEMORY	STANDARD	Main Flash 1MB/ SDRAM 16MB/ FONT Flash 8MB
SERIAL BAUD RATE		Max.115,200 bps
SENSOR	STANDARD	Gap, Black mark, Cover open
POWER	TYPE	External SMPS
	AC	100 ~ 240Vac, 1.5A, 50~60Hz
	DC	24 Vdc 1.75A
AUTO CUTTER	TYPE	Guillotine
	LIFE	200,000 cuts, Max 20 cycle/1 min
CERTIFICATION		KCC, CE, CB
EMULATION		EPL II, ZPL II Command compatible
OPERATING TEMPERATURE		0°C ~ 40°C
OPERATING HUMIDITY		10% ~ 90%
STORAGE TEMPERATURE		-20°C ~ 60°C
STORAGE HUMIDITY		10% ~ 90%

## DIMENSION

DIMENSION	W x D x H (mm)	182 x 120 x 123
	W x D x H (inch)	7.16 x 4.72 x 4.48
WEIGHT		1.5kg

## ETC

OPTION		Auto Cutter, External Paper Supply
--------	--	------------------------------------

## Direct Thermal Printer



LK-B30II

PRINTING	METHOD	Direct thermal
	SPEED	152mm/sec
	WIDTH	104mm (4.1")
	LENGTH	1,000mm (39.3")
	RESOLUTION	203 DPI (8 dots/mm)
BARCODE	1D	Code39, Code128 with subsets A/B/C/Auto, UCC/EAN-128, Code93, Codabar, Interleaved 2 of 5, UPC-A, UPC-E, UPC-A and E with 2 or 5 digit extension, EAN-8, EAN-13, EAN-8 and 13 with 2 or 5 digit extensions, Postnet, Plessey, MSI-3, German Post CodeLogmars, Code11, UPC Interleaved 2 of 5, Industrial 2 of 5, Standard 2 of 5, Planet, ANSI, Logmars
	2D	MaxiCode, PDF 417, Data Matrix, QR Code, MicroPDF417, AZTEC, Code 49, CODABLOCK, RSS
FONT SPECIFICATION	EPL II	6 bitmapped 8x12, 10x16, 12x20, 14x24, 32x48, 24x24(KSC5601)
	ZPL II	9 bitmapped 5x9, 7x11, 10x18, 15x28, 13x26, 40x60, 13x21, 24x24 2 smooth scalable(English, Korean)

MEDIA	TYPE	Roll, Fanfold, Blackmark, Continuous, Gap, Notch Sensor
	WIDTH	22~ 114mm
	THICKNESS	0.065 ~ 0.20mm
	ROLL DIAMETER	Up to 127mm (5")
	INNER CORE	25.4mm (1") or 38.1mm (1.5")
RIBBON	WIDTH	-
	LENGTH	-
	TYPE	-

INTERFACE	STANDARD	USB, Serial(RS-232C), Ethernet
	OPTION	Wi-Fi(802.11a/b/g/n), Bluetooth Smart Ready (Bluetooth4.2+BLE)

MEMORY	STANDARD	Main Flash 1MB/ SDRAM 16MB/ FONT Flash 8MB
SERIAL BAUD RATE		Max.115,200 bps
SENSOR	STANDARD	Gap, Black mark, Cover open
POWER	TYPE	External SMPS
	AC	100 ~ 240Vac, 1.5A, 50~60Hz
	DC	24 Vdc 1.75A
AUTO CUTTER	TYPE	-
	LIFE	-
CERTIFICATION		KCC, CE, CB, UL
EMULATION		EPL II, ZPL II Command compatible
OPERATING TEMPERATURE		0°C ~ 40°C
OPERATING HUMIDITY		10% ~ 90%
STORAGE TEMPERATURE		-20°C ~ 60°C
STORAGE HUMIDITY		10% ~ 90%

DIMENSION	W x D x H (mm)	190 x 254 x 169
	W x D x H (inch)	7.48 x 10.0 x 4.29
WEIGHT		2kg

OPTION		External Paper Supply
--------	--	-----------------------



LK-B30IIE

PRINTING	METHOD	Direct thermal
	SPEED	152mm/sec
	WIDTH	108mm (4.25")
	LENGTH	1,000mm (39.3")
	RESOLUTION	203 DPI (8 dots/mm)
BARCODE	1D	Code39, Code128 with subsets A/B/C/Auto, UCC/EAN-128, Code93, Codabar, Interleaved 2 of 5, UPC-A, UPC-E, UPC-A and E with 2 or 5 digit extension, EAN-8, EAN-13, EAN-8 and 13 with 2 or 5 digit extensions, Postnet, Plessey, MSI-3, German Post CodeLogmars, Code11, UPC Interleaved 2 of 5, Industrial 2 of 5, Standard 2 of 5, Planet, ANSI, Logmars
	2D	MaxiCode, PDF 417, Data Matrix, QR Code, MicroPDF417, AZTEC, Code 49, CODABLOCK, RSS
FONT SPECIFICATION	EPL II	6 bitmapped 8x12, 10x16, 12x20, 14x24, 32x48, 24x24(KSC5601)
	ZPL II	9 bitmapped 5x9, 7x11, 10x18, 15x28, 13x26, 40x60, 13x21, 24x24 2 smooth scalable(English, Korean)

MEDIA	TYPE	Roll, Fanfold, Blackmark, Continuous, Gap, punched hole, Notch Sensor
	WIDTH	25.4~115mm
	THICKNESS	0.060 ~ 0.20mm
	ROLL DIAMETER	Up to 127mm (5")
	INNER CORE	25.4mm (1")
RIBBON	WIDTH	-
	LENGTH	-
	TYPE	-

INTERFACE	STANDARD	USB, Serial(RS-232C), Ethernet
	OPTION	Wi-Fi(802.11a/b/g/n), Bluetooth Smart Ready (Bluetooth4.2+BLE)

MEMORY	STANDARD	Main Flash 1MB/ SDRAM 16MB/ FONT Flash 8MB
SERIAL BAUD RATE		Max.115,200 bps
SENSOR	STANDARD	Gap, Black mark, Cover open
POWER	TYPE	External SMPS
	AC	100 ~ 240Vac, 1.5A, 50~60Hz
	DC	24 Vdc 2.5A
AUTO CUTTER	TYPE	Guillotine
	LIFE	500,000 cuts, Max 20 cycle/1 min(0.06mm Paper)
CERTIFICATION		CE,FCC,IC,KC,UL,CB
EMULATION		EPL II, ZPL II Command compatible
OPERATING TEMPERATURE		5°C ~ 40°C
OPERATING HUMIDITY		25% ~ 85%
STORAGE TEMPERATURE		-20°C ~ 60°C
STORAGE HUMIDITY		10% ~ 90%

DIMENSION	W x D x H (mm)	190 x 262 x 168
	W x D x H (inch)	7.48 x 10.31 x 6.61
WEIGHT		1.52kg

OPTION		Auto cutter, Peeler
--------	--	---------------------



## Thermal Transfer Printer



LK-B24



LK-B20II / LK-B230II

## PRINTING SPEC

PRINTING	METHOD	
	SPEED	
	WIDTH	
	LENGTH	
	RESOLUTION	
BARCODE	1D	
	2D	
FONT SPECIFICATION	EPL II	
	ZPL II	

Thermal transfer and Direct thermal
127mm/sec
104mm (4.1")
1,000mm (39.3")
203 DPI (8 dots/mm)
Code39, Code128 with subsets A/B/C/Auto, UCC/EAN-128, Code93, Codabar, Interleaved 2 of 5, UPC-A, UPC-E, UPC-A and E with 2 or 5 digit extension, EAN-8, EAN-13, EAN-8 and 13 with 2 or 5 digit extensions, Postnet, Plessey, MSI-3, German Post CodeLogmars, Code11, UPC_Interleaved 2 of 5, Industrial 2 of 5, Standard 2 of 5, Planet, ANSI, Logmars
MaxiCode, PDF 417, Data Matrix, QR Code, MicroPDF417, AZTEC, Code 49, CODABLOCK, RSS
6 bitmapped 8x12, 10x16, 12x20, 14x24, 32x48, 24x24(KSC5601)
9 bitmapped 5x9, 7x11, 10x18, 10x18, 15x28, 13x26, 40x60, 13x21, 24x24 2 smooth scalable(English, Korean)

Thermal transfer and Direct thermal
127mm/sec
104mm (4.1")
1,000mm (39.3")
203 DPI (8 dots/mm)
Code39, Code128 with subsets A/B/C/Auto, UCC/EAN-128, Code93, Codabar, Interleaved 2 of 5, UPC-A, UPC-E, UPC-A and E with 2 or 5 digit extension, EAN-8, EAN-13, EAN-8 and 13 with 2 or 5 digit extensions, Postnet, Plessey, MSI-3, German Post CodeLogmars, Code11, UPC_Interleaved 2 of 5, Industrial 2 of 5, Standard 2 of 5, Planet, ANSI, Logmars
MaxiCode, PDF 417, Data Matrix, QR Code, MicroPDF417, AZTEC, Code 49, CODABLOCK, RSS
6 bitmapped 8x12, 10x16, 12x20, 14x24, 32x48, 24x24(KSC5601)
9 bitmapped 5x9, 7x11, 10x18, 10x18, 15x28, 13x26, 40x60, 13x21, 24x24 2 smooth scalable(English, Korean)

Thermal transfer and Direct thermal
102mm/sec
104mm (4.1")
1,000mm (39.3")
300 DPI (12 dots/mm)
Code39, Code128 with subsets A/B/C/Auto, UCC/EAN-128, Code93, Codabar, Interleaved 2 of 5, UPC-A, UPC-E, UPC-A and E with 2 or 5 digit extension, EAN-8, EAN-13, EAN-8 and 13 with 2 or 5 digit extensions, Postnet, Plessey, MSI-3, German Post CodeLogmars, Code11, UPC_Interleaved 2 of 5, Industrial 2 of 5, Standard 2 of 5, Planet, ANSI, Logmars
MaxiCode, PDF 417, Data Matrix, QR Code, MicroPDF417, AZTEC, Code 49, CODABLOCK, RSS
6 bitmapped 8x12, 10x16, 12x20, 14x24, 32x48, 24x24(KSC5601)
9 bitmapped 5x9, 7x11, 10x18, 10x18, 15x28, 13x26, 40x60, 13x21, 24x24 2 smooth scalable(English, Korean)

## MEDIA SPEC

MEDIA	TYPE	
	WIDTH	
	THICKNESS	
	ROLL DIAMETER	
	INNER CORE	
RIBBON	WIDTH	
	LENGTH	
	TYPE	

Roll, Fanfold, Blackmark, Continuous, Gap, Notch Sensor
20 ~114mm
0.065 ~ 0.20mm
Up to 127mm (5")
25.4mm (1") or 38.1mm (1.5")
110mm (4.3")
75M, Ø 35mm (1.3")
Wax, Wax/Resin, Resin

Roll, Fanfold, Tag, Blackmark, Continuous, Gap, Notch Sensor
18 ~118mm
0.065 ~ 0.20mm
Up to 127mm (5")
25.4mm (1") or Ø 38.1mm(1.5")
33~110mm (1.3 ~ 4.3")
360M, Ø 67mm (2.63")
Wax, Wax/Resin, Resin

Roll, Fanfold, Tag, Blackmark, Continuous, Gap, Notch Sensor
18 ~118mm
0.065 ~ 0.20mm
-
25.4mm (1") or Ø 38.1mm(1.5")
33~110mm (1.3 ~ 4.3")
360M, Ø 67mm (2.63")
Wax, Wax/Resin, Resin

## INTERFACE

INTERFACE	STANDARD	
	OPTION	

USB, Serial(RS-232C), Ethernet
-

USB, Serial(RS-232C), Ethernet
Wi-Fi(802.11a/b/g/n), Bluetooth Smart Ready (Bluetooth 4.2+BLE)

USB, Serial(RS-232C), Ethernet
Wi-Fi(802.11a/b/g/n), Bluetooth Smart Ready (Bluetooth 4.2+BLE)

## HARDWARE SPEC

MEMORY	STANDARD	
SERIAL BAUD RATE		
SENSOR	STANDARD	
POWER	TYPE	
	AC	
	DC	
AUTO CUTTER	TYPE	
	LIFE	
CERTIFICATION		
EMULATION		
OPERATING TEMPERATURE		
OPERATING HUMIDITY		
STORAGE TEMPERATURE		
STORAGE HUMIDITY		

Main Flash 1MB/ SDRAM 16MB/ FONT Flash 8MB
Max.115,200 bps
Gap, Black mark, Cover open, Ribbon encoder
External SMPS
100 ~ 240Vac, 1.5A, 50~60Hz
24 Vdc 2.5A
-
-
FCC, KCC, UL/cUL, CE, CB
EPL II, ZPL II Command compatible
0°C ~ 40°C
10% ~ 90%
-20°C ~ 60°C
10% ~ 90%

Main Flash 1MB/ SDRAM 16MB/ FONT Flash 8MB
Max.115,200 bps
Gap, Black mark, Cover open, Ribbon encoder
External SMPS
100 ~ 240Vac, 1.5A, 50~60Hz
24 Vdc 2.5A
Guillotine
200,000 cuts, Max 20 cycle/1 min
KCC, CE, CB
EPL II, ZPL II Command compatible
0°C ~ 40°C
10% ~ 90%
-20°C ~ 60°C
10% ~ 90%

Main Flash 1MB/ SDRAM 16MB/ FONT Flash 8MB
Max.115,200 bps
Gap, Black mark, Cover open, Ribbon encoder
External SMPS
100 ~ 240Vac, 1.5A, 50~60Hz
24 Vdc 2.5A
Guillotine
200,000 cuts, Max 20 cycle/1 min
KCC, CE, CB
EPL II, ZPL II Command compatible
0°C ~ 40°C
10% ~ 90%
-20°C ~ 60°C
10% ~ 90%

## DIMENSION

DIMENSION	W x D x H (mm)	
	W x D x H (inch)	
WEIGHT		

216.2 x 250.5 x 160.65
8.5 x 9.8 x 6.3
1.9kg

215 x 287 x 231
8.46 x 11.3 x 9.09
3.6kg

215 x 287 x 231
8.46 x 11.3 x 9.09
3.6kg

## ETC

OPTION	
--------	--

External Paper Supply
-----------------------

Peeler, Auto Cutter, External Paper Supply
--

Peeler, Auto Cutter, External Paper Supply
--

## RFID



LK-B230IIR

## PRINTING SPEC

PRINTING	METHOD	Thermal transfer and Direct thermal
	SPEED	102mm/sec
	WIDTH	104mm (4.1")
	LENGTH	Max.1000mm
	RESOLUTION	300 DPI (12 dots/mm)
BARCODE	1D	Code39, Code128 with subsets A/B/C/Auto, UCC/EAN-128, Code93, Codabar, Interleaved 2 of 5, UPC-A, UPC-E, UPC-A and E with 2 or 5 digit extension, EAN-8, EAN-13, EAN-8 and 13 with 2 or 5 digit extensions, Postnet, Plessey, MSI-3, German Post CodeLogmars, Code11, UPC Interleaved 2 of 5, Industrial 2 of 5, Standard 2 of 5, Planet, ANSI, Logmars
	2D	MaxiCode, PDF 417, Data Matrix, QR Code, MicroPDF417, AZTEC, Code 49, CODABLOCK, RSS
FONT SPECIFICATION	BITMAP FONT	6 bitmapped 8x12, 10x16, 12x20, 14x24, 32x48, 24x24(KSC5601)
	SCALABLE FONT	9 bitmapped 5x9, 7x11, 10x18, 10x18, 15x28, 13x26, 40x60, 13x21, 24x24 2 smooth scalable(English, Korean)

## MEDIA SPEC

PAPER	TYPE	Roll, Fanfold, Tag, Blackmark, Continuous, Gap, Notch Sensor
	WIDTH	18~118mm (0.7~4.64")
	THICKNESS	0.065 ~ 0.20mm
	ROLL SIZE	127mm (5.0")
RIBBON	TYPE	Thermal Ribbon(Wax, Resin, Wax-Resin) Core Internal Diameter : 25.4mm (1")
	WIDTH	33mm ~ 110mm (1.3" ~ 4.3")
	LENGTH	360M, Ø 67mm (2.63")

## HARDWARE SPEC

MEMORY	STANDARD	Flash 1MB(in CPU), SDRAM 16MB, Serial Flash BMB, EEPROM 2KB
SERIAL BAUD RATE		Max.115,200bps
SENSOR	STANDARD	Gap, Black mark, Ribbon Encoder, Cover Open
OPERATING FREQUENCY		900MHz
SUPPORT TAG		ISO 18000-6C
RF POWER		30dbm ± 1dbm(1W)
MODULATION		PR-ASK
RFID Spec Supported		Auto error check (100% Verifying after printing if tag is defective)
TEMPERATURE	OPERATING TEMPERATURE	5 ~ 40°C
	STORAGE TEMPERATURE	-20 ~ 60°C
HUMIDITY	OPERATING HUMIDITY	35 ~ 80%
	STORAGE HUMIDITY	10 ~ 90%

## INTERFACE

INTERFACE	STANDARD	USB, Serial, Ethernet
-----------	----------	-----------------------

## DIMENSION

DIMENSION	W x D x H (mm)	215 x 287 x 231
	W x D x H (inch)	8.46 x 11.29 x 9.09
WEIGHT		7.39lbs / 3.6kg

## Accessories

## External Paper Supply

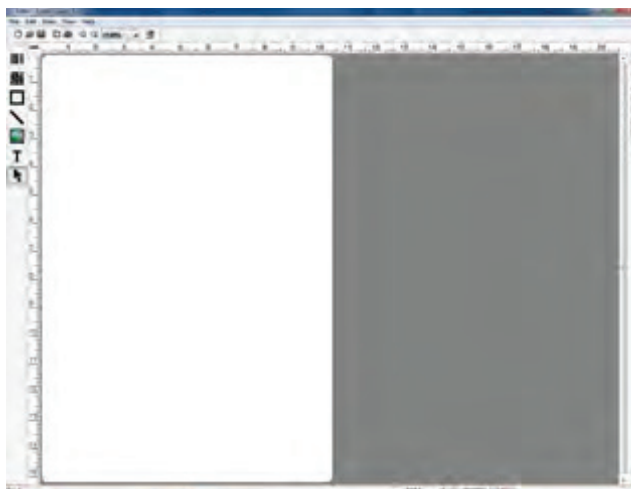


LK-B20II / LK-B230II



LK-B425

Print Editing Software



Windows®- based



Label Cooker

Label Cooker is for basic barcode label and tag design solution that can easily design edit and print labels, tags, and receipts.

It supports 30 different types of 1D barcode and 10 different types of 2D barcode to suit various barcode and data printing needs.

Benefit

- The menus allow for simple use of frequently used functions
- Easy to set up, an intuitive edit method reduces training time for trainees
- A wide range of more than 50 barcode choices suitable for users to input various data
- Supports more than 19 graphic formats including JPG, BMP, PNG that enable the input of various images and design labels

Labeling Sample

You can design your own labels through SEWOO's Label Cooker and print a variety of labels as shown below.



You can download our Label Cooker on our website without any charges.

## Mobile Printer

SEWOO Mobile printers are compact, long-lasting, versatile.

LK-P Series is designed to be ideal for mobile receipt or label printing

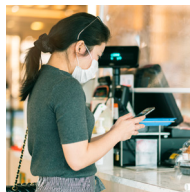
LK-P printers are compact yet powerful, maintaining a long battery life and paper capacity. It offers the flexibility to adjust to a wide range of requirements not only in paper width (2/3/4 inches) but also in connectivity. They're capable of secure wireless communications and adaptable to multiple other interfaces. The LK-P series support a variety of O/S drivers, including Win CE/Mobile, iOS, Linux, Symbian, Blackberry and more to meet the various needs of your mobile workforce. Get the convenience and value of the LK-P series and enjoy the benefits and reliability!

### Application

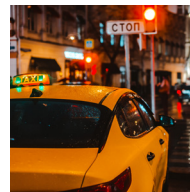
#### Receipt



Delivery



Retail

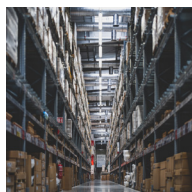


Transportation



Penalty

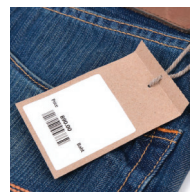
#### Receipt / Label



Logistics



Hospital



Retail



Parking

### Key feature



#### Compact sized design with excellent durability

SEWOO Mobile printers provide both a rugged design and strong durability that are optimized for mobile use. They are drop resistant from up to 2.1m (onto concrete) and are IP54 certified. Our printers also provide high-speed printing at 80mm-127mm per second. The compact design allows for one-handed use and a secure grip that will make carrying convenient.

---

### 2-Inch Printer



LK-P12II



LK-P20II



LK-P22



LK-P24



LK-P25II

---

### 3-Inch Printer



LK-P30II



LK-P34



LK-P34L



LK-P300

---

### 4-Inch Printer



LK-P41



LK-P43II



LK-P400

# AMC Solution

The A.M.C solution is a new cutting technology that is used in mobile printers for easy handling of paper cut by pushing a button with one hand.

AMC solution enables easy, precise, one-handed paper cutting.

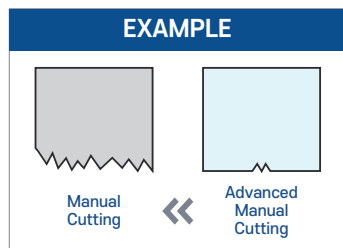
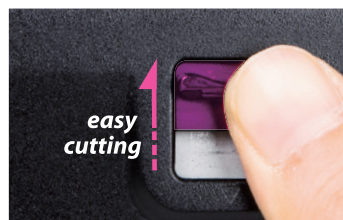
LK-P printers are compact yet powerful, maintaining a long battery life and paper capacity. It offers the flexibility to adjust to a wide range of requirements not only in paper width (2/3/4 inches) but also in connectivity. They're capable of secure wireless communications and adaptable to multiple other interfaces. The LK-P series support a variety of O/S drivers, including Win CE/Mobile, iOS, Linux, Symbian, Blackberry and more to meet the various needs of your mobile workforce.

Get the convenience and value of the LK-P series and enjoy the benefits and reliability!



## Reliable Cutter by SEWOO

### AMC (Advanced Manual Cutter) Technology



2-inch  
**LK-P24**

- Yellow
- Black



3-inch  
**LK-P34**

- Yellow
- Black



### Key feature

- Receipt Mobile Printer
- Prints at 100mm/s
- Strong and Powerful Design against Dust and Water (LK-P24 : IP43, LK-P34 : IP54)
- Long Battery Life (LK-P24 : 1,450mAh, LK-P34 : 2,000mAh)
- Easy Bluetooth connection setting by using NFC Function!
- Light Weight



# Premium Mobile

LK-P400, LK-P300

## High-performance mobile printer in a compact size.

### Key feature

- Best-in-Class: Fast, Compact Size, Light Weight
- Rugged and Powerful  
IP54/2M, 2.1M drop tested, Printing at 127mm/sec
- OS-based platform; Supports S-MDM
- Triple Interface built-in  
USB, Wi-Fi (802.11a/b/g/n/ac) and Bluetooth Smart Ready Combo (Bluetooth 4.2+BLE+NFC Tag)
- Compatible with Variety Media Types Label/Liner-less/Receipt papers
- USB-C type charging (P300)



All specifications and designs are subject to change without notice.

## 2-Inch Printer



LK-P12II

## PRINTING SPEC

PRINTING	METHOD
	SPEED
	WIDTH
	RESOLUTION
DOT	PITCH
	CHARACTER PER LINE
CHARACTER SET	ALPHA NUMERIC CHARACTER
	EXPENDED GRAPHIC
INTERNATIONAL CHARACTER	
	BARCODE
1D	
	2D
FONTS	

Direct thermal
127mm/sec
48mm, 384 Dots/line
203 DPI
8 Dot/mm, 0.125 Pitch
32 columns
42 columns
95
128 *18 page(1 space page)
14
EAN-8, EAN-8(+2+5), EAN-13, EAN-13(+2+5), Codabar, Code11, Code39, Code93, Code128, ITF, UPC-A(+2+5), UPC-E, UPC-E(+2+5), Planet, etc
QR, PDF417, MicroPDF417, Maxicode, Datamatrix, Aztec, RSS14, TLC39
FontA(12x24), FontB(9x17), FontO(1/2/4/5/6/7), TTF FontO, FontA~H, FontGS, Font1~8, Asian Font(KOR, JPN, CHN, GB2312, CHN, BIG5), Resident TTF, Downloadable TTF, Downloadable Bitmap



LK-P20II

Direct thermal
80mm/sec
48mm, 384 Dots/line
203 DPI
8 Dot/mm, 0.125 Pitch
32 columns
42 columns
95
128 *18 page(1 space page)
14
EAN-8, EAN-8(+2+5), EAN-13, EAN-13(+2+5), Codabar, Code11, Code39, Code93, Code128, ITF, UPC-A(+2+5), UPC-E, UPC-E(+2+5), Planet, etc
QR, PDF417, MicroPDF417, Maxicode, Datamatrix, Aztec, RSS14, TLC39
FontA(12x24), FontB(9x17), FontO(1/2/4/5/6/7), TTF FontO, FontA~H, FontGS, Font1~8, Asian Font(KOR, JPN, CHN, GB2312, CHN, BIG5), Resident TTF, Downloadable TTF, Downloadable Bitmap



LK-P22

Direct thermal
100mm/sec
48mm, 384 Dots/line
203 DPI
8 Dot/mm, 0.125 Pitch
32 columns
42 columns
95
128 *18 page(1 space page)
14
EAN-8, EAN-8(+2+5), EAN-13, EAN-13(+2+5), Codabar, Code11, Code39, Code93, Code128, ITF, UPC-A(+2+5), UPC-E, UPC-E(+2+5), Planet, etc
QR, PDF417, MicroPDF417, Maxicode, Datamatrix, Aztec, RSS14, TLC39
FontA(12x24), FontB(9x17), FontO(1/2/4/5/6/7), TTF FontO, FontA~H, FontGS, Font1~8, Asian Font(KOR, JPN, CHN, GB2312, CHN, BIG5), Resident TTF, Downloadable TTF, Downloadable Bitmap

## PAPER SPEC

PAPER	TYPE
	WIDTH
	THICKNESS
	ROLL DIAMETER
	ROLL CORE INNER DIAMETER

Thermal Receipt/Label
12.7~58mm
0.06~0.16mm
Max. Ø 56mm
12.5mm ± 0.5mm

Thermal Receipt
25~58mm
0.06~0.09mm
Max. Ø 48mm
12.5mm ± 0.5mm

Thermal Receipt/Label
58mm
0.06mm
Max. Ø 40mm
12.5mm ± 0.5mm

## INTERFACE

INTERFACE	STANDARD
	OPTION

Serial(RS-232C), USB
Wi-Fi(802.11a/b/g/n), Bluetooth Smart Ready(Bluetooth4.2+BLE)

Serial(RS-232C), USB
Wi-Fi(802.11a/b/g/n), Bluetooth Smart Ready(Bluetooth4.2+BLE)

USB
Wi-Fi(802.11a/b/g/n), Bluetooth Smart Ready(Bluetooth4.2+BLE)

## HARDWARE SPEC

MEMORY	FLASH(MAX.)
	RAM
BATTERY CHARGER	
BATTERY	
SENSOR	STANDARD
RELIABILITY	TPH LIFE
TEMPERATURE	OPERATING TEMPERATURE
	STORAGE TEMPERATURE
HUMIDITY	OPERATING HUMIDITY
	STORAGE HUMIDITY
IP	
DROP	
CERTIFICATION	
LCD	

16MB(Max 64MB)
SDRAM 16MB (MAX.64MB)
AC/DC Charger 8.4V / 1A
7.2V 3350mAh Li-ion 4Hrs Charging time 90Hrs Stand-by (with Bluetooth)
Paper end, Gap, Black mark, Cover open, Peeler detect, Peeler S/W
50km
-10 ~ 50°C
-20 ~ 60°C
10 ~ 90%
10 ~ 90%
IP42 certified
1.5m(set only)
KC, CE, FCC, IC, UL/cUL, Mfi, UKCA,BCS,CB
FSTN LCD 128 x 64 dots

16MB (MAX.32MB)
SDRAM 8MB
AC/DC Charger 8.4V / 1A
7.4V 2000mAh Li-ion, 2.7 Hrs Charging time 61Hrs Stand-by
Paper end
50km
-10 ~ 50°C
-20 ~ 60°C
10 ~ 80%
10 ~ 90%
IP42, IP54(with case)-P20 certified
1.2m(set only), 1.8(with case)
KC, CE, FCC, IC, UL/cUL, Mfi, UKCA,BCS,CB
-

8MB(Max 64MB)
SDRAM 8MB
AC/DC Charger 8.4V / 1A
7.4V 1450mAh Li-ion 1.7 Hrs Charging time 36 Hrs Stand-by
Paper end, Cover open
50km
-10 ~ 50°C
-20 ~ 60°C
10 ~ 80%
10 ~ 90%
IP42 certified
1.5m(set only), 1.8m(with case)
KC, CE, FCC, IC, UL/cUL, Mfi, UKCA,BCS,CB
-

## DIMENSION

DIMENSION	W x D x H (mm)
	W x D x H (inch)
WEIGHT	

104×158×85
4.1×6.22×3.34
580g (with battery)

96×139×62
3.66×5.43×2.44
440g (with battery)

80×119.4×44
3.14×4.70×1.73
242.5g (With Battery)

## ETC

OPTION	
--------	--

Peeler, RTC Battery Cradle (P30) 4 Bay Cradle
---

MSR, IC Card Reader, RTC Battery Cradle (P20) 4 Bay Cradle
--

Set cradle, Battery cradle, MSR&ICT(Factory option)
--



## 2-Inch Printer



LK-P24



LK-P25II

## PRINTING SPEC

PRINTING	METHOD
	SPEED
	WIDTH
	RESOLUTION
DOT	PITCH
CHARACTER PER LINE	Font A(12x24)
	Font B(9x17)
CHARACTER SET	ALPHA NUMERIC CHARACTER
	EXPENDED GRAPHIC
	INTERNATIONAL CHARACTER
BARCODE	1D
	2D
FONTS	

## PAPER SPEC

PAPER	TYPE
	WIDTH
	THICKNESS
	ROLL DIAMETER
	ROLL CORE INNER DIAMETER

## INTERFACE

INTERFACE	STANDARD
	OPTION

## HARDWARE SPEC

MEMORY	FLASH(MAX.)
	RAM
BATTERY CHARGER	
BATTERY	
SENSOR	STANDARD
RELIABILITY	TPH LIFE
TEMPERATURE	OPERATING TEMPERATURE
	STORAGE TEMPERATURE
HUMIDITY	OPERATING HUMIDITY
	STORAGE HUMIDITY
IP	
DROP	
CERTIFICATION	
LCD	

## DIMENSION

DIMENSION	W x D x H (mm)
	W x D x H (inch)
WEIGHT	

## ETC

OPTION	
--------	--

	Direct thermal
	100mm/sec
	48mm, 384 Dots/line
	203 DPI
	8 Dot/mm, 0.125 Pitch
	32 columns
	42 columns
	95
	128 *18 page(1 space page)
	14
	EAN-8, EAN-8(+2+5), EAN-13, EAN-13(+2+5), Codabar, Code11, Code39, Code93, Code128, ITF, UPC-A(+2+5), UPC-E, UPC-E(+2+5), Planet, etc
	QR, PDF417, MicroPDF417, Maxicode, Datamatrix, Aztec, RSS14, TLC39
	FontA(12x24), FontB(9x17), FontO(1/2/4/5/6/7, TTF Font0, FontA-H, FontGS, Font1-8, Asian Font(KOR, JPN, CHN_GB2312, CHN_BIG5), Resident TTF, Downloadable TTF, Downloadable Bitmap

	Thermal Receipt
	58mm
	0.06mm
	Max. Ø 40mm
	12.5mm ± 0.5mm

	USB, NFC Tag
	Wi-Fi(802.11a/b/g/n), Bluetooth Smart Ready(Bluetooth4.2+BLE)

	8MB(Max 64MB)
	SDRAM 8MB
	AC/DC Charger 8.4V / 1A
	7.4V 1450mAh Li-ion 1.7 Hrs Charging time 36 Hrs Stand-by

	Paper end, Black mark sensor
	50km
	-10 ~ 50°C
	-20 ~ 60°C
	10 ~ 80%
	10 ~ 90%
	IP43 certified
	1.5m(set only)
	KC, CE, FCC, IC, UL/cUL, Mfi, UKCA,BCS,CB
	-

	81.5×121.4×45.3
	3.2×4.77×1.78
	264.1g (With Battery)

	Set cradle, Battery cradle
--	----------------------------

	Direct thermal
	80mm/sec
	48mm, 384 Dots/line
	203 DPI
	8 Dot/mm, 0.125 Pitch
	32 columns
	42 columns
	95
	128 *18 page(1 space page)
	14
	EAN-8, EAN-8(+2+5), EAN-13, EAN-13(+2+5), Codabar, Code11, Code39, Code93, Code128, ITF, UPC-A(+2+5), UPC-E, UPC-E(+2+5), Planet, etc
	QR, PDF417, MicroPDF417, Maxicode, Datamatrix, Aztec, RSS14, TLC39
	FontA(12x24), FontB(9x17), FontO(1/2/4/5/6/7, TTF Font0, FontA-H, FontGS, Font1-8, Asian Font(KOR, JPN, CHN_GB2312, CHN_BIG5), Resident TTF, Downloadable TTF, Downloadable Bitmap

	Thermal paper
	58mm
	0.06mm
	Max. Ø 40mm
	12.5mm ± 0.5mm

	USB C Type, Bluetooth Smart Ready(Bluetooth4.2+BLE), NFC Tag
	-

	8MB(Max 64MB)
	SRAM 8MB
	AC/DC Adapter 5V / 1A
	3.6V 3250mAh Li-ion 4 Hrs Charging time(Charger) 6 Hrs Charging time(USB) 63 Hrs Stand-by

	Paper end, Cover open(Black mark sensor)
	50km
	-10 ~ 50°C
	-20 ~ 60°C
	10 ~ 80%
	10 ~ 90%
	IP54 With Case
	1.5m(set only) / 1.8m(with case)
	KC, CE, FCC, IC, UL/cUL, Mfi, UKCA,BCS,CB
	-

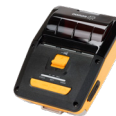
	79×103.2×44.4
	3.1×4.06×1.74
	190g - TBD

	-
--	---

## 3-Inch Printer



LK-P30II



LK-P34

## PRINTING SPEC

PRINTING	METHOD
	SPEED
	WIDTH
	RESOLUTION
DOT	PITCH
	CHARACTER PER LINE
CHARACTER SET	ALPHA NUMERIC CHARACTER
	EXPENDED GRAPHIC
BARCODE	INTERNATIONAL CHARACTER
	1D
FONTS	2D

## PAPER SPEC

PAPER	TYPE
	WIDTH
	THICKNESS
	ROLL DIAMETER
	ROLL CORE INNER DIAMETER

## INTERFACE

INTERFACE	STANDARD
	OPTION

## HARDWARE SPEC

MEMORY	FLASH(MAX.)
	RAM
BATTERY CHARGER	
BATTERY	
SENSOR	STANDARD
RELIABILITY	TPH LIFE
TEMPERATURE	OPERATING TEMPERATURE
	STORAGE TEMPERATURE
HUMIDITY	OPERATING HUMIDITY
	STORAGE HUMIDITY
IP	
DROP	
CERTIFICATION	
LCD	

## DIMENSION

DIMENSION	W x D x H (mm)
	W x D x H (inch)
WEIGHT	

## ETC

OPTION	
--------	--

Direct thermal
100mm/sec
72mm, 576 Dots/line
203 DPI
8 Dot/mm, 0.125 Pitch
48 columns
64 columns
95
128 *18 page(1 space page)
14
EAN-8, EAN-8(+2+5), EAN-13, EAN-13(+2+5), Codabar, Code11, Code39, Code93, Code128, ITF, UPC-A(+2+5), UPC-E, UPC-E(+2+5), Planet, etc
QR, PDF417, MicroPDF417, Maxicode, Datamatrix, Aztec, RSS14, TLC39
FontA(12x24), FontB(9x17), Font0/1/2/4/5/6/7, TTF Font0, FontA-H, FontGS, Font1-8, Asian Font(KOR, JPN, CHN_GB2312, CHN_BIG5), Resident TTF, Downloadable TTF, Downloadable Bitmap

Thermal Receipt/Label
25 ~ 80mm
0.06~0.16mm
Max. Ø 56mm
12.5mm ± 0.5mm

Serial(RS-232C), USB
Wi-Fi(802.11a/b/g/n), Bluetooth Smart Ready(Bluetooth4.2+BLE)

16MB(Max.32MB)
SDRAM 8MB
AC/DC Charger 8.4V / 1A
7.2V 3350mAh Li-ion 4Hrs Charging time 90Hrs Stand-by (with Bluetooth)

Paper end, Black mark, Cover open, Gap
--

50km
-10 ~ 50°C
-20 ~ 60°C
10 ~ 80%
10 ~ 90%

IP42, IP54(with case) certified
---------------------------------

1.2m(set only), 1.8(with case)
--------------------------------

KC, CE, FCC, IC, UL/cUL, Mfi, UKCA,BCS,CB
---

-
---

120×152×70
------------

4.72×5.98×2.75
----------------

640g (with Battery)
---------------------

MSR, IC Card Reader, RTC Battery Cradle (P30) 4 Bay Cradle
--

Direct thermal
100mm/sec
72mm, 576 Dots/line
203 DPI
8 Dot/mm, 0.125 Pitch
48 columns
64 columns
95
128 *18 page(1 space page)
14
EAN-8, EAN-8(+2+5), EAN-13, EAN-13(+2+5), Codabar, Code11, Code39, Code93, Code128, ITF, UPC-A(+2+5), UPC-E, UPC-E(+2+5), Planet, etc
QR, PDF417, MicroPDF417, Maxicode, Datamatrix, Aztec, RSS14, TLC39
FontA(12x24), FontB(9x17), Font0/1/2/4/5/6/7, TTF Font0, FontA-H, FontGS, Font1-8, Asian Font(KOR, JPN, CHN_GB2312, CHN_BIG5), Resident TTF, Downloadable TTF, Downloadable Bitmap

Thermal Receipt
80mm (PAPER GUIDE : 58mm)
0.06mm
Max. Ø 50mm
12.5mm ± 0.5mm

USB, NFC Tag
Wi-Fi(802.11a/b/g/n), Bluetooth Smart Ready(Bluetooth4.2+BLE)

8MB(Max.64MB)
SDRAM 8MB (MAX.16MB)

AC/DC Charger 8.4V / 1A
-------------------------

7.4V 2,000mAh Li-ion 2.7 Hrs Charging time 61 Hrs Stand-by
--

Paper end, Black mark sensor
------------------------------

50km
------

-10 ~ 50°C
------------

-20 ~ 60°C
------------

10 ~ 80%
----------

10 ~ 90%
----------

IP54 certified
----------------

1.5m(set only)
----------------

KC, CE, FCC, IC, UL/cUL, Mfi, UKCA,BCS,CB
---

-
---

107.5×145×56
--------------

4.23×5.70×2.20
----------------

422g (With Battery)
---------------------

Battery Cradle (P20) 4 Bay Cradle
-----------------------------------

## 3-Inch Printer



LK-P34L



LK-P300

## PRINTING SPEC

PRINTING	METHOD
	SPEED
	WIDTH
	RESOLUTION
DOT PITCH	
CHARACTER PER LINE	Font A(12x24)
	Font B(9x17)
CHARACTER SET	ALPHA NUMERIC CHARACTER
	EXPENDED GRAPHIC
	INTERNATIONAL CHARACTER
BARCODE	1D
	2D
FONTS	

Direct thermal
100mm/sec
72mm, 576 Dots/line
203 DPI
8 Dot/mm, 0.125 Pitch
48 columns
64 columns
95
128 *18 page(1 space page)
14
EAN-8, EAN-8(+2+5), EAN-13, EAN-13(+2+5), Codabar, Code11, Code39, Code93, Code128, ITF, UPC-A(+2+5), UPC-E, UPC-E(+2+5), Planet, etc
QR, PDF417, MicroPDF417, Maxicode, Datamatrix, Aztec, RSS14, TLC39
FontA(12x24), FontB(9x17), Font0/1/2/4/5/6/7, TTF Font0, FontA-H, FontGS, Font1-8, Asian Font(KOR, JPN, CHN_GB2312, CHN_BIG5), Resident TTF, Downloadable TTF, Downloadable Bitmap

Direct thermal
127mm/sec * 20 mm wide paper applies 4 ips
72mm, 576 Dots/line
203 DPI
8 Dot/mm, 0.125 Pitch
48 columns
64 columns
95
128 *18 page(1 space page)
14
EAN-8, EAN-8(+2+5), EAN-13, EAN-13(+2+5), Codabar, Code11, Code39, Code93, Code128, ITF, UPC-A(+2+5), UPC-E, UPC-E(+2+5), Planet, etc
QR, PDF417, MicroPDF417, Maxicode, Datamatrix, Aztec, RSS14, TLC39
FontA(12x24), FontB(9x17), Font0/1/2/4/5/6/7, TTF Font0, FontA-H, FontGS, Font1-8, Asian Font(KOR, JPN, CHN_GB2312, CHN_BIG5), Resident TTF, Downloadable TTF, Downloadable Bitmap

## PAPER SPEC

PAPER	TYPE
	WIDTH
	THICKNESS
	ROLL DIAMETER
	ROLL CORE INNER DIAMETER

Thermal Receipt/Label/Linerless(Max. Restick)
80mm (PAPER GUIDE : 58mm)
0.06mm~0.16mm
Max. Ø 50mm
12.5mm ± 0.5mm

Thermal Receipt/Label/Linerless(Max. X2)
20 ~ 80mm
0.06~0.16mm
Max. Ø 66.5mm
12.5mm ± 0.5mm

## INTERFACE

INTERFACE	STANDARD
	OPTION

USB, NFC Tag
Wi-Fi(802.11a/b/g/n), Bluetooth Smart Ready(Bluetooth4.2+BLE)

USB C Type, NFC Tag Wi-Fi(802.11a/b/g/n/ac) + Bluetooth Smart Ready (Bluetooth4.2+BLE) Combo
-

## HARDWARE SPEC

MEMORY	FLASH(MAX.)
	RAM
BATTERY CHARGER	
BATTERY	
SENSOR	STANDARD
RELIABILITY	TPH LIFE
TEMPERATURE	OPERATING TEMPERATURE
	STORAGE TEMPERATURE
HUMIDITY	OPERATING HUMIDITY
	STORAGE HUMIDITY
IP	
DROP	
CERTIFICATION	
LCD	

8MB(Max 64MB)
SDRAM 8MB (MAX.16MB)
AC/DC Charger 8.4V / 1A
7.4V 2.000mAh Li-ion 2.7 Hrs Charging time 61 Hrs Stand-by
Paper end, Black mark sensor
50km
-10 ~ 50°C
-20 ~ 60°C
10 ~ 80%
10 ~ 90%
IP54 certified
1.5m(set only)
KC, CE, FCC, IC, UL/cUL, Mfi, UKCA,BCS,CB
-

8GB or 16GB or 32GB
DDR3 256MB
AC/DC Adapter 5V / 2A
7.2V 2500mAh, 5000mAh 3Hrs Charging time(2500mAh) 6Hrs Charging time(5000mAh) 20Hrs Stand-by(2500mAh) 39Hrs Stand-by(5000mAh)
Paper end, Gap, Black mark, Cover open
50km
-20 ~ 55°C (20 mm wide paper : -5 ~ 55°C)
-30 ~ 65°C
10 ~ 90%
10 ~ 90%
IP54 certified
2.1m(set only)
KC, CE, FCC, IC, UL/cUL, Mfi, BCS, NOM, UKCA,CB
TFT 27.7 *27.7mm

## DIMENSION

DIMENSION	W x D x H (mm)
	W x D x H (inch)
WEIGHT	

107.5×145×56
4.23×5.70×2.20
390g (With Battery)

117.6×157.5×80
4.6×6.1×3.1
725g (with 2500mAh battery)

## ETC

OPTION	
--------	--

Battery Cradle (P20) 4 Bay Cradle
--------------------------------------

5000mAh battery, Set Cradle(Non-development), RTC, Battery Cradle (P30), 4 Bay Cradle
---

## 4-Inch Printer



LK-P41



LK-P43II



LK-P400

## PRINTING SPEC

PRINTING	METHOD
	SPEED
	WIDTH
	RESOLUTION
DOT	PITCH
	CHARACTER PER LINE
CHARACTER SET	ALPHA NUMERIC CHARACTER
	EXPENDED GRAPHIC
INTERNATIONAL CHARACTER	
	BARCODE
1D	
2D	
FONTS	

Direct thermal
80mm/sec
104mm, 832 Dots/line
203 DPI
8 Dot/mm, 0.125 Pitch
69 columns
92 columns
95
128 *18 page(1 space page)
14
EAN-8, EAN-8(+2+5), EAN-13, EAN-13(+2+5), Codabar, Code11, Code39, Code93, Code128, ITF, UPC-A(+2+5), UPC-E, UPC-E(+2+5), Planet, etc
QR, PDF417, MicroPDF417, Maxicode, Datamatrix, Aztec, RSS14, TLC39
FontA(12x24), FontB(9x17), FontO(1/2/4/5/6/7), TTF FontO, FontA~H, FontGS, Font1~8, Asian Font(KOR, JPN, CHN, GB2312, CHN, BIG5), Resident TTF, Downloadable TTF, Downloadable Bitmap

Direct thermal
100mm/sec
104mm, 832 Dots/line
203 DPI
8 Dot/mm, 0.125 Pitch
69 columns
92 columns
95
128 *18 page(1 space page)
14
EAN-8, EAN-8(+2+5), EAN-13, EAN-13(+2+5), Codabar, Code11, Code39, Code93, Code128, ITF, UPC-A(+2+5), UPC-E, UPC-E(+2+5), Planet, etc
QR, PDF417, MicroPDF417, Maxicode, Datamatrix, Aztec, RSS14, TLC39
FontA(12x24), FontB(9x17), FontO(1/2/4/5/6/7), TTF FontO, FontA~H, FontGS, Font1~8, Asian Font(KOR, JPN, CHN, GB2312, CHN, BIG5), Resident TTF, Downloadable TTF, Downloadable Bitmap

Direct thermal
127mm/sec
104mm, 832 Dots/line
203 DPI
8 Dot/mm, 0.125 Pitch
69 columns
92 columns
95
128 *18 page(1 space page)
14
EAN-8, EAN-8(+2+5), EAN-13, EAN-13(+2+5), Codabar, Code11, Code39, Code93, Code128, ITF, UPC-A(+2+5), UPC-E, UPC-E(+2+5), Planet, etc
QR, PDF417, MicroPDF417, Maxicode, Datamatrix, Aztec, RSS14, TLC39
FontA(12x24), FontB(9x17), FontO(1/2/4/5/6/7), TTF FontO, FontA~H, FontGS, Font1~8, Asian Font(KOR, JPN, CHN, GB2312, CHN, BIG5), Resident TTF, Downloadable TTF, Downloadable Bitmap

## PAPER SPEC

PAPER	TYPE
	WIDTH
	THICKNESS
	ROLL DIAMETER
	ROLL CORE INNER DIAMETER

Thermal Receipt/Label
50 ~ 112mm
0.06~0.16mm
Max. Ø 56mm
12.5mm ± 0.5mm

Thermal Receipt/Label
50 ~ 112mm
0.06~0.16mm
Max. Ø 56mm
12.5mm ± 0.5mm

Thermal Receipt/Label/Linerless(Max. X2)
50 ~ 112mm
0.06~0.16mm
Max. Ø 57.5mm
12.5mm ± 0.5mm

## INTERFACE

INTERFACE	STANDARD
	OPTION

Serial(RS-232C), USB, NFC Tag
Wi-Fi(802.11a/b/g/n), Bluetooth Smart Ready(Bluetooth4.2+BLE)

Serial(RS-232C), USB
Wi-Fi(802.11a/b/g/n), Bluetooth Smart Ready(Bluetooth4.2+BLE)

USB, NFC Tag
Wi-Fi(802.11a/b/g/n/ac) + Bluetooth Smart Ready (Bluetooth4.2+BLE) Combo
-

## HARDWARE SPEC

MEMORY	FLASH(MAX.)
	RAM
BATTERY CHARGER	
BATTERY	
SENSOR	STANDARD
	RELIABILITY
TEMPERATURE	OPERATING TEMPERATURE
	STORAGE TEMPERATURE
HUMIDITY	OPERATING HUMIDITY
	STORAGE HUMIDITY
IP	
DROP	
CERTIFICATION	
LCD	

8MB (Max 64MB)
SDRAM 16MB (Max 64MB)
AC/DC Charger 8.4V / 1A
7.2V 3350mAh, 6700mAh 4.0Hrs Charging time(3350mAh) 7.5Hrs Charging time(6700mAh) 180Hrs Stand-by(6700mAh)
Paper end, Gap, Black mark, Cover open
50km
-10 ~ 50°C
-20 ~ 60°C
35 ~ 80%
10 ~ 90%
IP54(with case) certified
1.2m(set only), 1.8(with case)
KC, CE, FCC, IC, UL/cUL, Mfi, UKCA, BCS
-

16MB(Max.32MB)
SDRAM 16MB(Max.32MB)
AC/DC Adapter 9V / 4A
7.2V 3350mAh, 6700mAh 3.5Hrs Charging time(3350mAh) 6.5Hrs Charging time(6700mAh) 118Hrs Stand-by(6700mAh)
Paper end, Gap, Black mark, Cover open, Peeler detect, Peeler S/W
50km
-21 ~ 55°C
-30 ~ 65°C
10 ~ 90%
10 ~ 90%
IP54 certified
1.8m(set only)
KC, CE, FCC, IC, UL/cUL, Mfi, UKCA,BCS,CB
WQVGA Color graphic 3" TFT LCD

8GB or 16GB or 32GB
DDR3 256MB
AC/DC Charger 8.4V / 1A
7.2V 2500mAh, 5000mAh 3.5Hrs Charging time(2500mAh) 5.5Hrs Charging time(5000mAh) 20Hrs Stand-by(2500mAh) 39Hrs Stand-by(5000mAh)
Paper end, Gap, Black mark, Cover open
50km
-20 ~ 55°C
-30 ~ 65°C
10 ~ 90%
10 ~ 90%
IP54 certified
2m(set only)
KC, CE, FCC, IC, UL/cUL, Mfi, BCS, NOM, UKCA, CB
TFT 27.7 *27.7mm

## DIMENSION

DIMENSION	W x D x H (mm)
	W x D x H (inch)
WEIGHT	

149×162×70
5.87×6.37×2.75
610g (with 3350mAh battery)

166×174×80
6.5×6.8×3.1
1kg (with 2600mAh battery)

155×157×67
6.1×6.1×2.6
840g (with 2500mAh battery)

## ETC

OPTION
--------

Battery Cradle (P41)
----------------------

Peeler, RTC Battery Cradle (P43)
-------------------------------------

5000mA battery, RTC, Battery Cradle (P30) 4 Bay Cradle
---

# Accessories

## Charger



Charger



Car charger



AC cord



Car charger



SMPS

## Charging Cradle



7.4V  
2600mAh  
LK-P12II  
LK-P30II

7.4V  
2500mAh  
LK-P300  
LK-P400



7.4V  
2000mAh  
LK-P34  
LK-P20II



7.4V  
2600mAh  
LK-P41  
LK-P43II



7.4V  
1450mAh  
LK-P22  
LK-P24



Printer Set Cradle  
(LK-P22/LK-P24)



4-bay  
Battery Cradle

## Interface Cable



LK-P20II



LK-P25II  
(IP54 Case)



LK-P25II



LK-P30II



LK-P41

### Leather Case

LK-P20, LK-P22, LK-P22 MI, LK-P22aNFC, LK-P25IP, LK-P24, LK-P30, LK-P31, LK-P34, LK-P41

### Leather Case\_IP54

LK-P20, LK-P22, LK-P24, LK-P30, LK-P41

## Interface Cable



Serial Cable



USB  
A-mini Type



USB  
C Type

## Interface Cable



Shoulder Strap  
Strap is available in all model.



Belt Strap / Clip

# KIOSK Printer

SEWOO KIOSK printers offer easy loading and versatility.

SMK Series are optimized solution to a variety of application

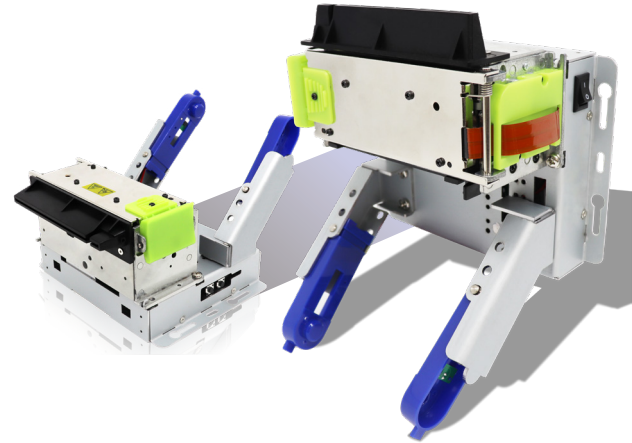
KIOSK Thermal printer module

## SMK2S Series (2inch model)

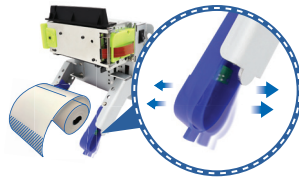
:V80, V120 / H80, H120

## SMK3S Series (3inch model)

:V80, V120 / H80, H120



### Key feature



#### Easy Paper Loading with Flexible Paper Holder

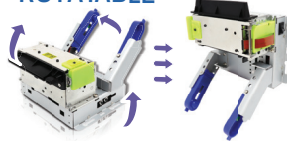
Paper remaining alarm sensor have users informing of the replacement time. Customized cutting method (Full cut or Partial cut).



#### All-In-One Printer Solution

Outstanding Ease of Development with all-in-one structure  
Printer + Control Board + Paper Holder

#### ROTATABLE



#### Kiosk Printer Solutions for Any Orientation

Applicable to a variety type of Kiosk with Horizontal & Vertical type of printer.

## KIOSK Printer



SMK2S-V80/V120, SMK2S-H80/H120

## PRINTING SPEC

PRINTING	METHOD
	SPEED
WIDTH	DIRECTION
	CHARACTER PER LINE
CHARACTER SPECIFICATIONS	
DOT DENSITY	
LINE SPACING	DEFAULT

Thermal line printing	
High speed mode: (203dpi x 203dpi) Approximately 250mm/sec maximum (1/6inch feed) (at 24V, 20°C)	
54mm (2.12"), 432 dot positions (203dpi)	Unidirectional with friction feed
12x24 (CPL 36 or 42)	9x17 (CPL 42 or 48)
Alphanumeric characters : 95 Extended graphics 128 x 7 pages (* including one space page) International characters : 32 1) English 2) Hangul 3) Chinese (GB2312, Big5) 4) Kanji	
203dpi x 203dpi	1/6 inch (4.23mm) Programmable by control command.



SMK3S-V80/V120, SMK3S-H80/H120

Thermal line printing	
High speed mode: (203dpi x 203dpi) Approximately 220mm/sec maximum (1/6inch feed) (at 24V, 20°C)	
72mm (2.83"), 576 dot positions (203dpi) 80mm (3.15"), 640 dot positions (203dpi)	Unidirectional with friction feed
48 CPL (12x24)	64 CPL (9x17)
Alphanumeric characters : 95 Extended graphics 128 x 7 pages (* including one space page) International characters : 32 1) English 2) Hangul 3) Chinese (GB2312, Big5) 4) Kanji	
203dpi x 203dpi	1/6 inch (4.23mm) Programmable by control command.

## HARDWARE SPEC

SENSOR	
RELIABILITY	MCFB
CUTTER LIFE	
ELECTRICAL CHARACTERISTICS	SUPPLY VOLTAGE
	CURRENT CONSUMPTION
TEMPERATURE	OPERATING TEMPERATURE
	STORAGE TEMPERATURE
HUMIDITY	OPERATING HUMIDITY
	STORAGE HUMIDITY
EMULATION	
DRIVER	
COVER OPEN SENSOR	
AUTO CUTTER	

Paper End, Paper low End Sensor, Black Mark, Gap (Optional : Paper Out Sensor)	
60 million lines	1,000,000 cuts with thickness 0.055-0.09mm, and/or TPH Life 100km
+24 VDC $\pm$ 7%	
Operating : Approx. 1.5A (at ASCII Printing) Peak : Approx. 10A (at print duty 100%, For 10 seconds or less) Stand-by : Approx. 0.03A	
5° to 50°C	-20° to 60°C (except for paper)
10 to 90%RH	
10 to 90%RH (except for paper)	
ESC/POS	
Windows, WinCE, Android, Java, OPOS, Linux	
Mechanical switch	
Partial cut : Cutting with one point center uncut Full cut : to prevent dot displacement, after cutting, paper must be fed approximately 1mm (14/360 inches) or more before printing.	

Paper End, Paper low End Sensor, Black Mark, Gap (Optional : Paper Out Sensor)	
60 million lines	1,000,000 cuts with thickness 0.055-0.09mm, and/or TPH Life 100km
+24 VDC $\pm$ 7%	
Operating : Approx. 1.5A (at ASCII Printing) Peak : Approx. 10A (at print duty 100%, For 10 seconds or less) Stand-by : Approx. 0.03A	
0° to 50°C	-20° to 60°C (except for paper)
10 to 90%RH	
10 to 90%RH (except for paper)	
ESC/POS	
Windows, WinCE, Android, Java, OPOS, Linux	
Mechanical switch	
Partial cut : Cutting with one point center uncut Full cut : to prevent dot displacement, after cutting, paper must be fed approximately 1mm (14/360 inches) or more before printing.	

## PAPER SPEC

THERMAL PAPER SPECIFICATIONS	RECOMMENDED
	THICKNESS
	WIDTH
	OUTER DIAMETER
	ROLL CORE

79 $\pm$ 0.5 mm	Thermal paper : 0.055-0.09mm Label paper : 0.10-0.20mm
25 ~ 60mm	$\varnothing$ 80 ~ 120 mm
Inside diameter : $\varnothing$ 13 mm	

79 $\pm$ 0.5 mm	Thermal paper : 0.055-0.09mm Label paper : 0.10-0.20mm
58 ~ 82mm	$\varnothing$ 80 ~ 120 mm
Inside diameter : $\varnothing$ 13 mm	

## INTERFACE

INTERFACE	STANDARD
-----------	----------

Standard : USB 2.0 / Serial (RS232C)
--------------------------------------

Standard : USB 2.0 / Serial (RS232C)
--------------------------------------

## ETC

PACKING	
---------	--

Power Supply, AC Cord, USB, Serial Cable
--

Power Supply, AC Cord, USB, Serial Cable
--

Copyright © 2024 Aroot Co., Ltd. All right reserved.  
All specifications and designs are subject to change without notice.

12/2024  
[www.miniprinter.com](http://www.miniprinter.com)



# sewoo

---

Aroot CO., Ltd.  
Republic of Korea [Head Office / R&D Center]  
28-6, Gajangsaneopdong-ro, Osan-si, Gyeonggi-do, 18103, Republic of Korea  
T. +82-31-8077-5000 F. +82-31-624-5310 E. [sales@miniprinter.com](mailto:sales@miniprinter.com)